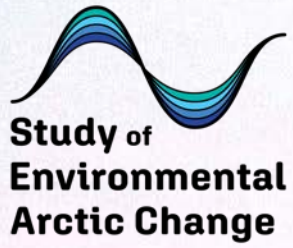
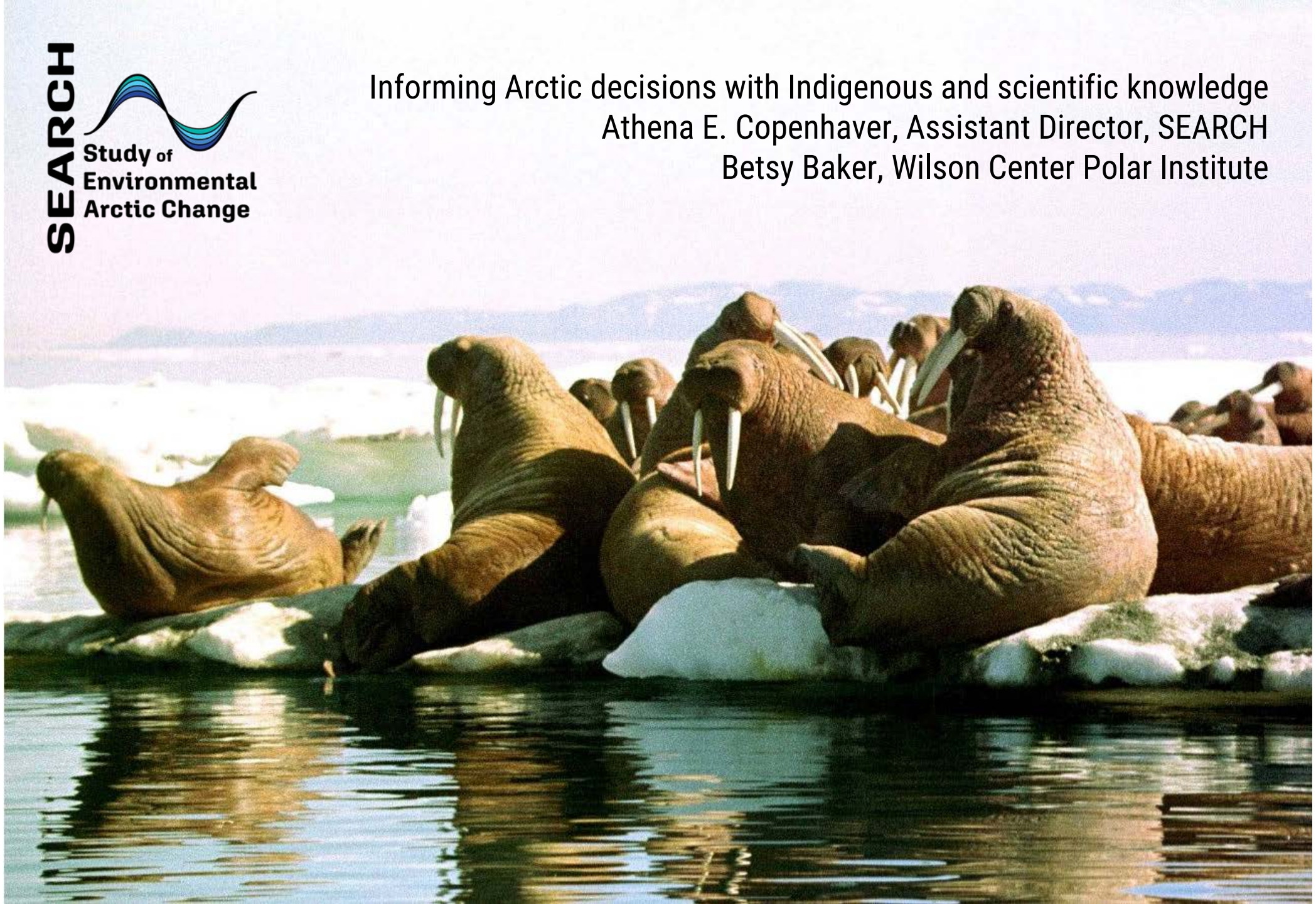


**SEARCH**



Informing Arctic decisions with Indigenous and scientific knowledge  
Athena E. Copenhaver, Assistant Director, SEARCH  
Betsy Baker, Wilson Center Polar Institute





Jackie Qatalina Schaeffer  
ANTHC



Francis Wiese  
Stantec



Jamie Donatuto  
Swinomish Indian  
Tribal Community

# Inform decisions in and about the Arctic with syntheses of Indigenous and scientific knowledge



Marika Holland  
National Center for  
Atmospheric Research



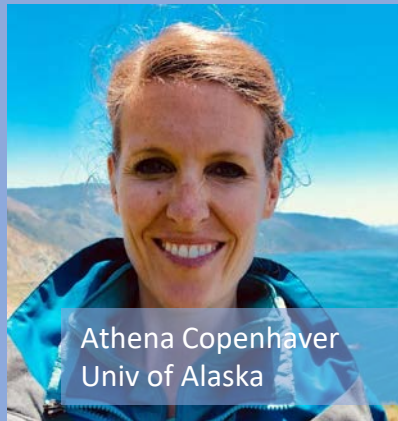
George Kling  
Univ of Michigan



Vera Kingeekuk Metcalf  
Eskimo Walrus Comm



Brendan Kelly  
Univ of Alaska



Athena Copenhaver  
Univ of Alaska



Evan Bloom  
Wilson Center



# **SEARCH's approach**

**Co-design**

**Complex collaboration**

**Conceptual framework**

**Co-production of knowledge**

**Co-Production Teams = 36 people across disciplines, ways of knowing**

**Drivers & Consequences of Arctic Environmental Change**

**Human Well-Being in the Changing Arctic Environment**

**International Cooperation & Economic Decision Making**



*Harness collaboration abilities*

*Reflect and Update*

**Goal:**  
*Produce and share actionable knowledge to inform decisions about the socio-ecological systems in the Arctic and beyond*

*Use shared framework to further research and knowledge exchange*

*Inform decision making with shared, holistic understanding*

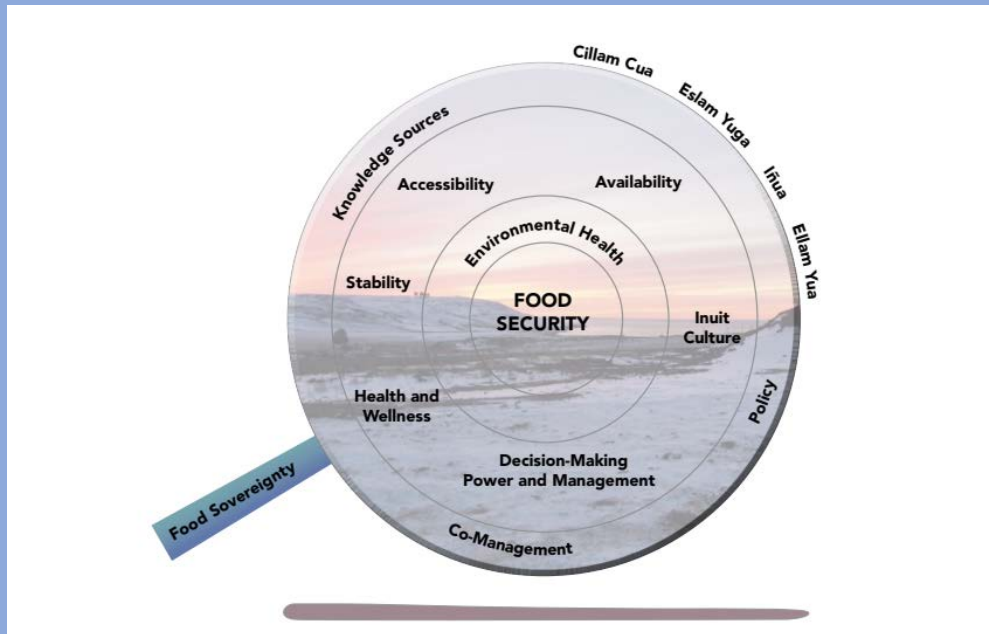
# Examples of Indigenous shared frameworks

Figure 1. Image of Arctic interlinking puzzle pieces. (systems). Note that the puzzle pieces may have multiple systems nested within one piece and that all demonstrate an interlinking between social and natural phenomena.



Image credit:

Inuit Circumpolar Council



# Example of scientific shared framework

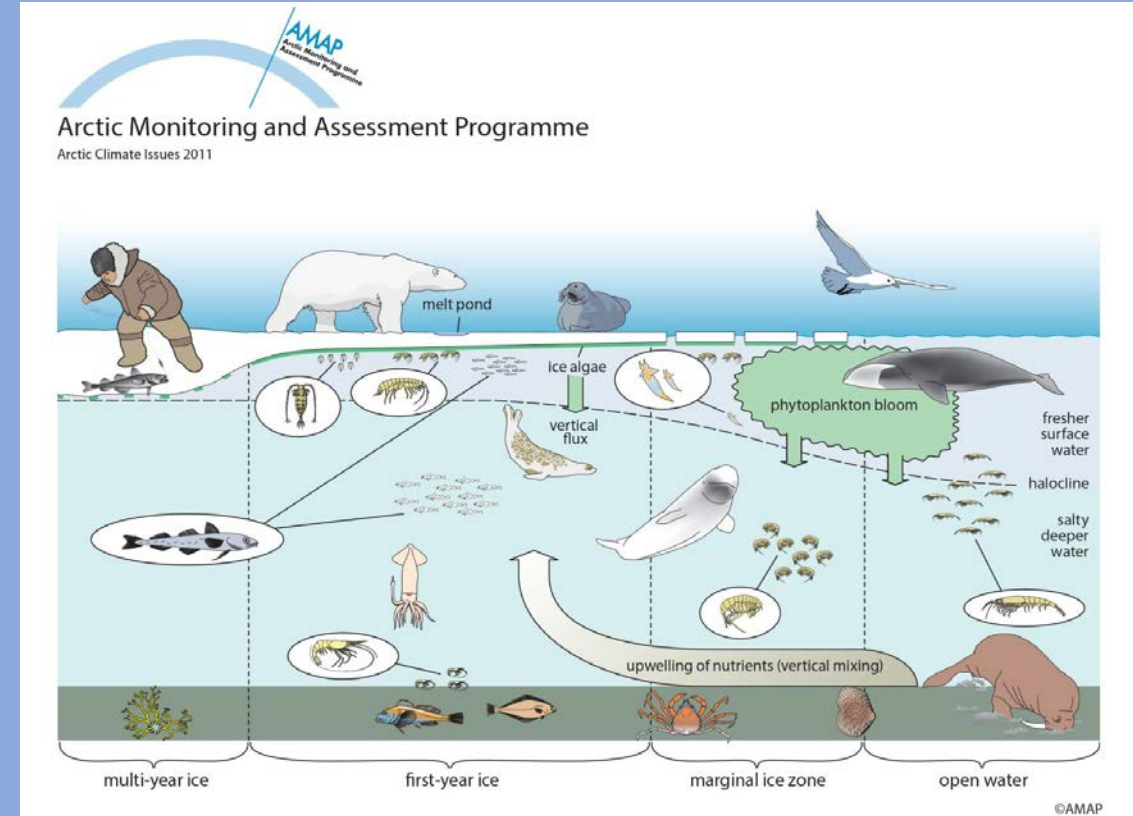


Image credit: Arctic Monitoring and Assessment Programme



[www.SEARCHArcticScience.org](http://www.SEARCHArcticScience.org)

Questions? [aecopenhaver@alaska.edu](mailto:aecopenhaver@alaska.edu)  
Athena E. Copenhaver

