

WERC Seminar Fall 2021

GRADUATE STUDENT FLASH TALKS Part I

Learn about WERC student research

Wednesday, September 15th, 2021

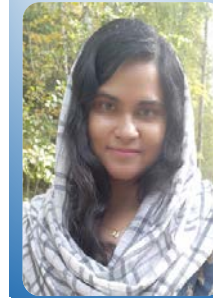
BP Design Theater (401 ELIF)

12-1 pm



ROBERT GRILLO
PhD Student, Archaeology

Mercury Dynamics of Ancient
Bones from the Aleutian
Archipelago: Ecological and
Cultural Significance



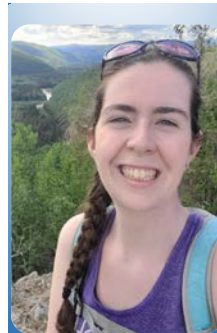
SADIA MAHMUDA
MS Student,
Water & Environmental Science

Marine in the Marine
Environment: Sources Potential
Adverse Effects



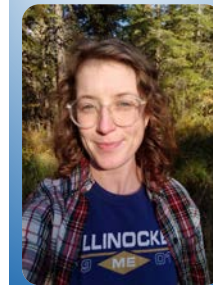
SCOTT CHANDLER
MS Student,
Wildlife Biology & Conservation

Fish and Mercury, a spatial and
temporal analysis in the western
Aleutian Islands



MARY KEENAN
MS Student, Marine Biology

Investigating the variability of total
mercury concentration [THg] in
Steller sea lion (*Eumetopias
jubatus*) bone



MARY SZATKOWSKI
MS Student,
Water & Environmental Science

Comparison of Satellite-Derived
Snow Data Benchmarks with Historic
Snow Survey Data from the North
Slope of Alaska using ILAMB
Software



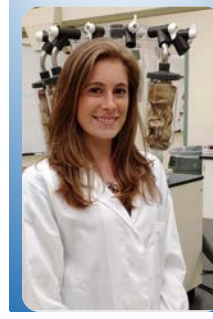
STEPHANIE CRAWFORD
MS Candidate, Biological Sciences

Fasting status of Steller sea lion
pups- a new tool to complement
population health assessments



MIRANDA LAZAR
PhD Student, Archaeology
Visiting 2021-22 from University of Arizona

A 4000-year retrospective study of
seabird diets; insights from
archaeological collections on Sanak
Island, Alaska



MICHELLE TRIFARI
MS Student, Marine Biology

Identifying pathways of
methylmercury through marine
food webs of the Aleutian Islands
using compound-specific stable
isotope analyses of amino acids