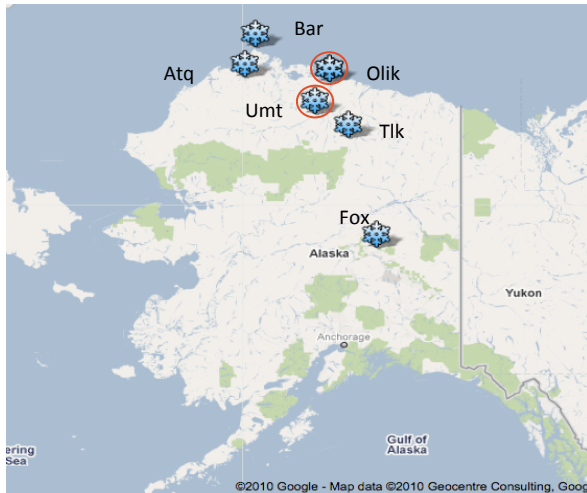

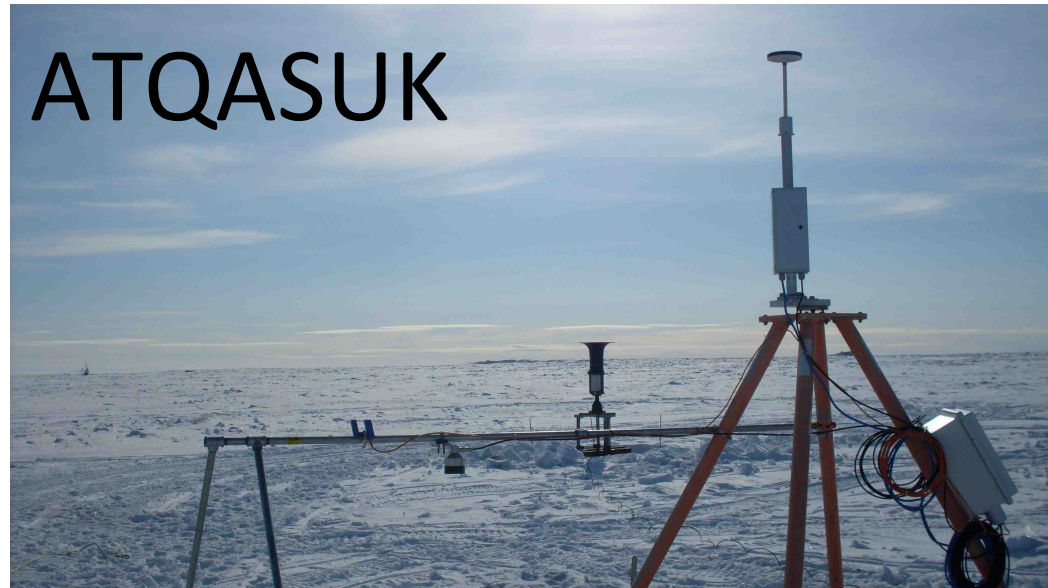


# UAF-managed Total Precipitation 'Hot Plate' Sensor Network: alternative for environments where gauges perform poorly

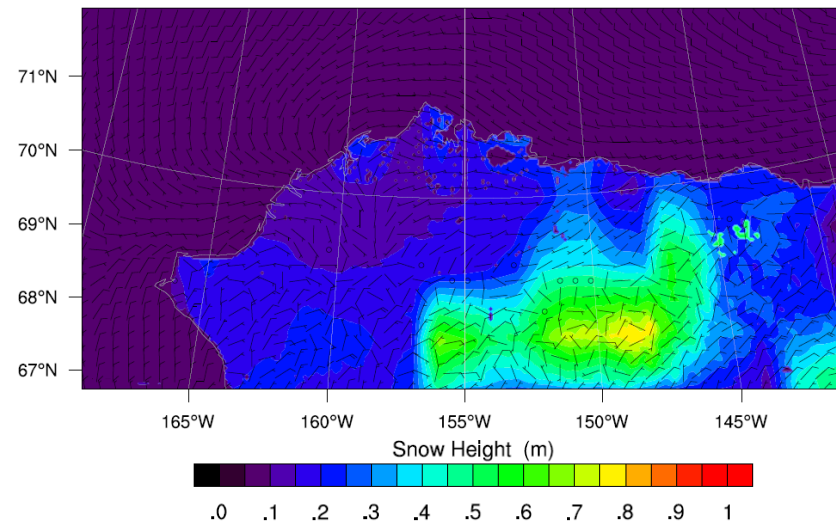


 = deploying in summer 2013

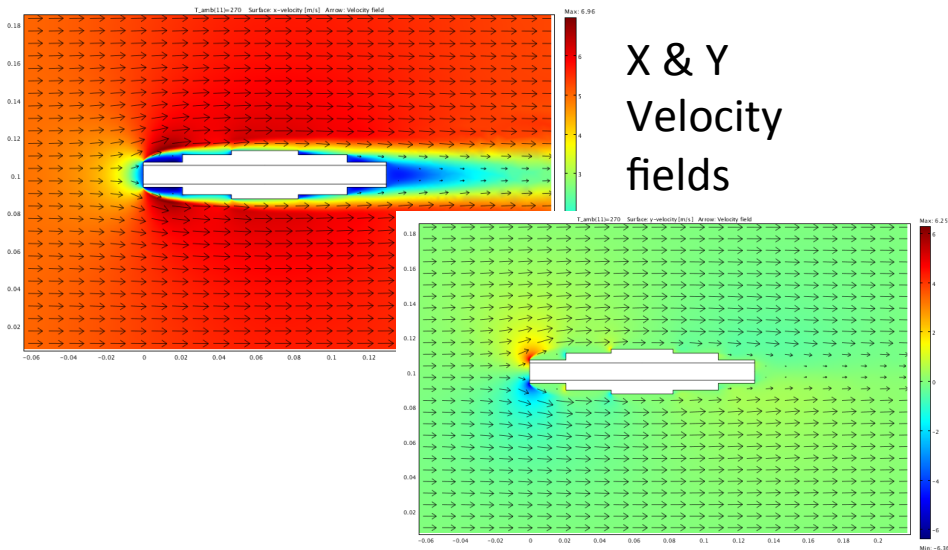
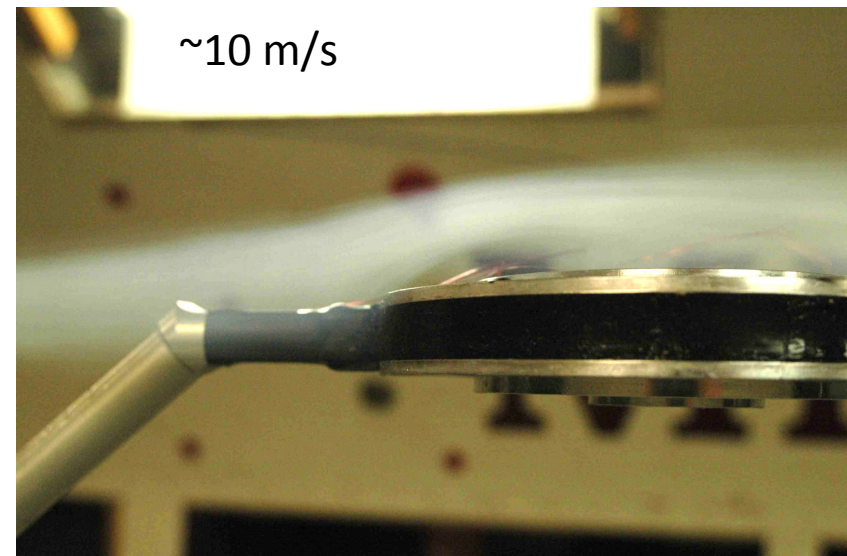
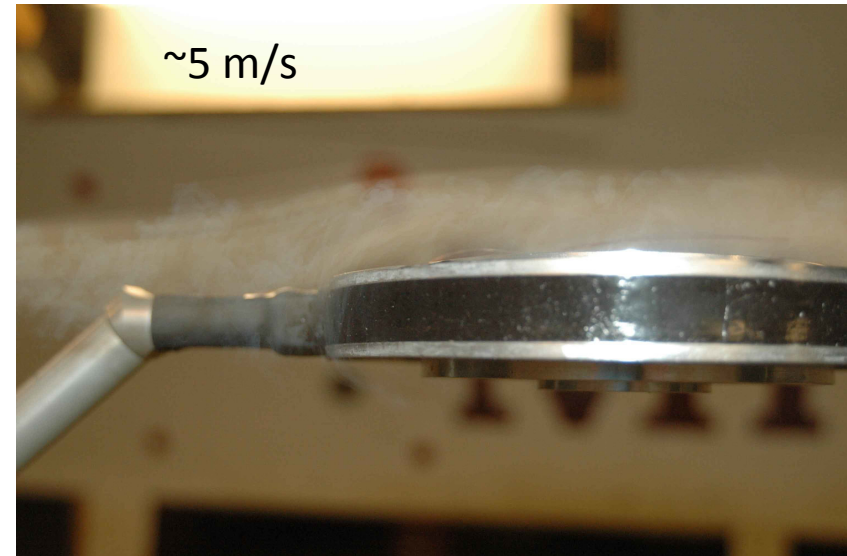
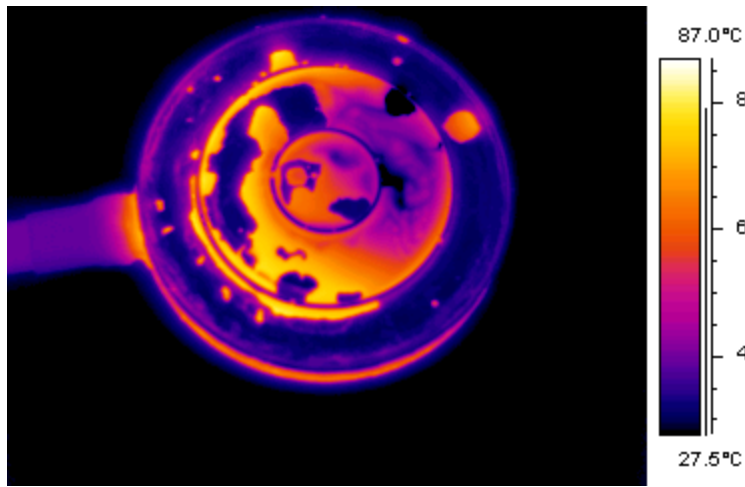


J. Cherry

Used for in situ studies and validation of models



# MIT wind tunnel testing of 'Hot Plate', IR measurement, algorithm development, CFD modeling



Images: J. Cherry, M. Itomlenskis (student)